

EASY TO USE GIS SOFTWARE

MAPINFO – GEOGRAPHIC INFORMATION SYSTEM

MapInfo Pro

A complete, desktop mapping solution for the geographic information system (GIS) analyst to visualize, analyze, edit, interpret, and output data — revealing relationships, patterns, and trends

Location data adds both insight and complexity to corporate decision making. Mistakes are too expensive for a trial-and-error approach to mapping. For example, if you've opened a new shopping mall, you can't relocate it once you realize your location intelligence was bad and you're not drawing the crowds you need.

MapInfo Pro is an easy-to-use geographic information system (GIS) that helps you more easily manage, analyze, and visualize location data — revealing relationships, patterns, and trends. The free MapInfo Pro Viewer extends this power to line-of-business users. Publishing templates make production of presentation-quality maps easy.

MapInfo Pro is now available as a subscription service. One- and three-year subscriptions offer maintenance, automatic notification of updates and upgrades, and contains features formerly only available in MapInfo Pro Advanced. These include our patented Multi-Resolution Raster (MRR) data format.

Benefits

Complete solution

An all-in-one solution that manages, analyzes, and visualizes data for mapping and map publishing

Custom applications

Solve your specific business needs with customized applications available in the MapInfo Marketplace

Scalable analytics

MapInfo Pro supports teams of all sizes, delivering tools for use across the entire organization

User-centric collaboration

Professional peer communities provide ideas, tips, and tricks

Particularly valuable to analysts working in the agriculture, oil and gas, and telecom industries, MRR is a high-performance format for storing and processing extremely large raster datasets. Use MapInfo Pro to explore, model, and act upon the world around you.

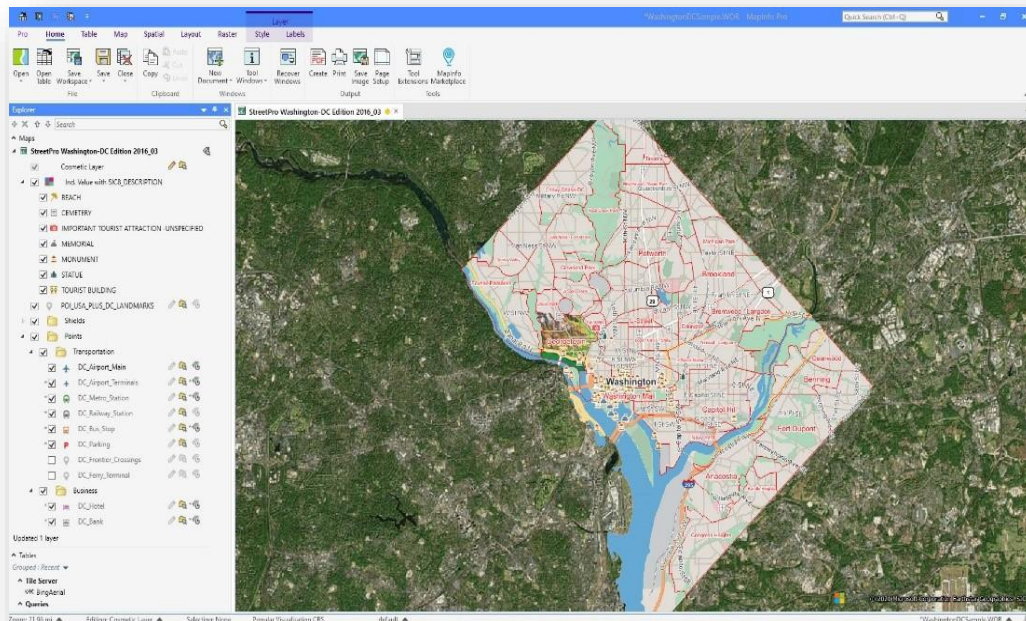


Figure 1: MapInfo Pro helps you explore, model, and act upon locations throughout the world.

Explore

Better understand a location by gathering information about its key features and how they interact. Visualize data through map symbols, themes, and labels. You can even overlay multiple datasets on a single map to distinguish patterns that would not otherwise be visible.

Model

Integrate your corporate data with maps and demographics. Combine this information with our powerful spatial querying and modeling tools. Run different scenarios for an accurate, up-to-date representation of a location's possibilities.

Act

Build models that are easily understood by non-technologists. Enable corporate decision makers to fully understand the attributes and drawbacks of each site, in each scenario. Help them take the type of action that propels business

The powerful tools of MapInfo Pro

MapInfo Pro offers expansive data support enabling GIS professionals to unlock and visualize information, thereby extracting location intelligence more easily. At the same time, customizable features help you tailor your MapInfo Pro experience. Additional features introduced or improved with the latest version of MapInfo Pro include:

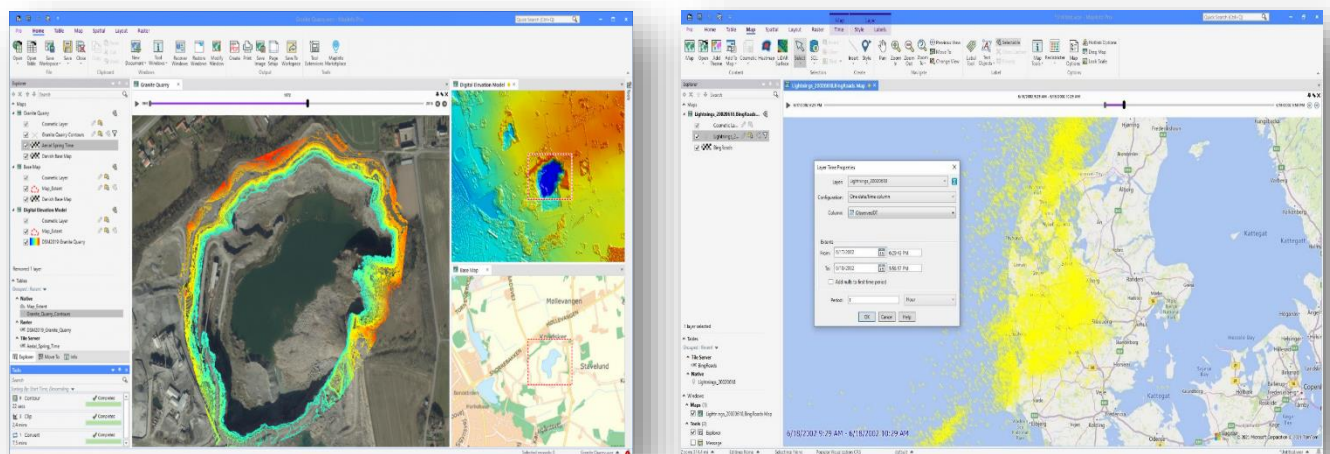


Figure – 2: Time series analysis of granite quarry extraction.

Enhanced data visualization – across space and time

- Want to chart 10-year population trends in a proposed development area? See how shopping patterns change with the weather? MapInfo Pro's new Time Series tool enables you to easily plot data changes over time. (See Figure 2.)
- Access and use online data sources, including Bing Maps and other satellite imagery. Then overlay these images onto your maps, highlighting roads and major landmarks for easy identification.
- Easily leverage large Web Feature Service (WFS) data requests with new support for WFS paging.

Accessible data – whatever the format

- Save time by accessing the data you need directly from the MapInfo Pro interface. MapInfo Pro supports a broad variety of file formats, including ESRI Shapefile, GeoJSON, KML, and text-based formats such as CSV.

Faster time to insight with enhanced data-select and design tools

- Simplify layout design with quick access to dynamic text-labeling tools.
- Slice and dice data for specific records with our new Select by Attribute tool. (See Figure 3.)
- Improve map design with new templates that make your creations more attractive and detailed.

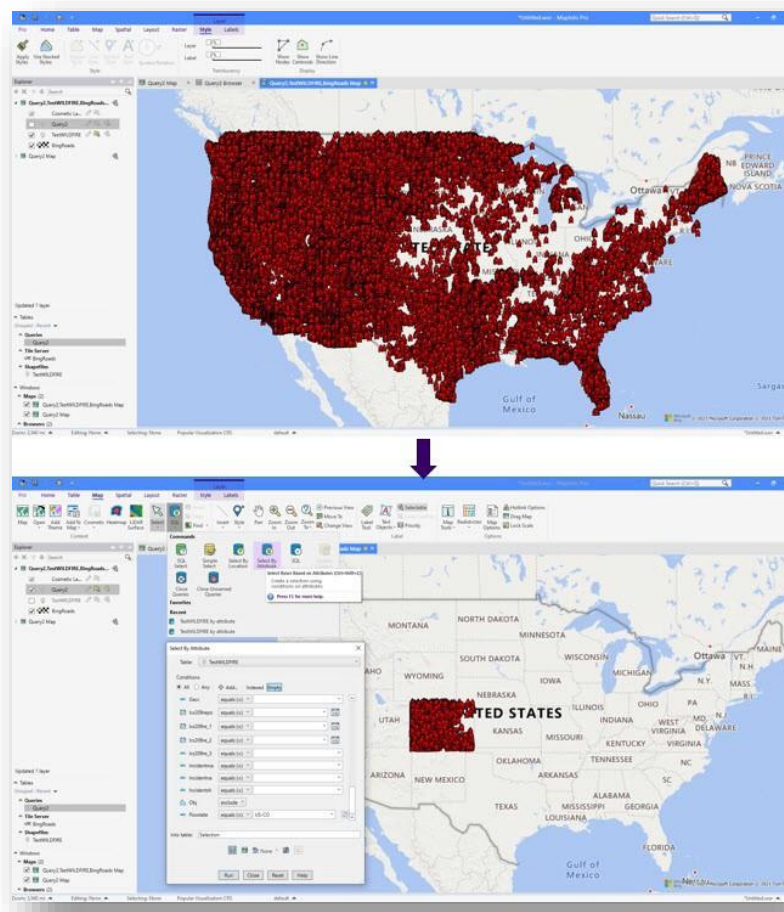


Figure – 3: Narrow your search and deepen understanding with a Select by Attribute query.

Extract information from raster data

Creating optimum insights from large spatial files can be a significant challenge. Use our patented Multi-Resolution Raster (MRR) data format for powerful spatial processing and map rendering. Identify, quantify, and visualize spatial patterns in raster datasets of practically unlimited size. Or use our Multi-Resolution Virtual Raster (MVR) to virtually merge, reproject, and resample raster grid data on-the-fly, without writing out new grid files to disk.

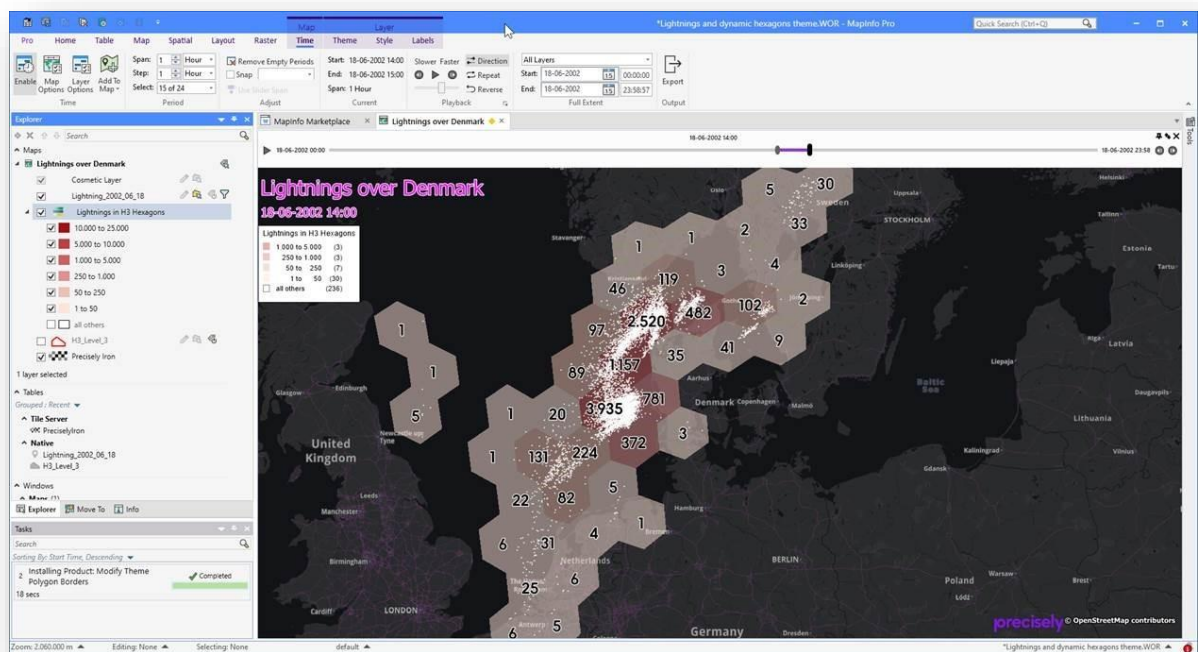


Figure – 4: Weather analysis in MapInfo Pro using time series and hexagon theme

Up-to-date geocoding with Precisely API services

- Get our best-in-class geocoding and routing services, updated monthly.
- Explore the improved usability of our account-management service page.

Premium Edition with Microsoft® Bing Maps

- Identify relationships, patterns and trends faster using Bing Maps as contextual background for your own business layers. Your subscription comes with access to Bing Maps aerial imagery and Bing Maps hybrid.
- Purchase MapInfo Pro Premium for access to all the functionality of MapInfo Pro plus Bing Roads and Bing Move Maps. These services allow you to search for and locate place names and addresses around the world.

Expert support

- Talk live to the technical support staff. Get trusted advice on implementation, optimization, troubleshooting, and issue resolution.
- Use our online case-management system for logging and tracking issues requiring support.
- Use the Precisely online knowledge base for product documentation and other resources.
- Access the MapInfo Pro Community to get inspired, learn from your peers and Precisely employees, guide the future of MapInfo Pro, and discover time-saving tips and tricks.

About Lepton Software

Lepton Software is a global leader and pioneer in location analytics & intelligence solutions. We are the largest Google Maps premier partners in India and offer cloud-based, comprehensive, light-weight, and fast geospatial solutions.

About Geotech Geospatial Pvt Ltd.

GEOTECH GEOSPATIAL, an ISO 9001: 2015 and ISO 2700:2013 certified software solutions company, provides complete Geo Spatial Solutions covering GIS, Image processing, Photogrammetry, Location Data Services, Business Analytics, Application Development – Web & Mobile. **GEOTECH** has partnered with OEM's Like Esri, Hexagon, Lepton Software for Mapinfo, Here Technologies and Savex for Tableau. With more than 2 decades of GIS domain expertise, We been instrumental in setting up GIS lab across various government departments, research organizations, academic institutions and private industries particularly in the southern part of India.